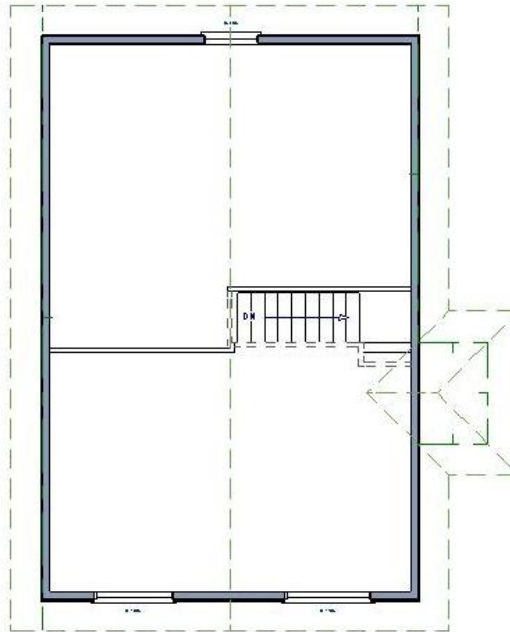




Main Floor 954 sq.ft.



Open Loft 146 sq.ft.

Brookside I sq. ft. 1100



Cliff & Chris Wheeler

19434 River Woods Dr

Bend, OR. 97702

541.389.6005 or
info@bakerpond.com

www.bakerpond.com

©2010 All rights reserved by Baker Pond Log Works